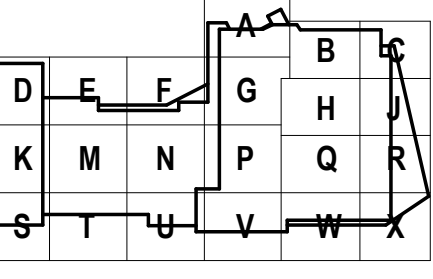
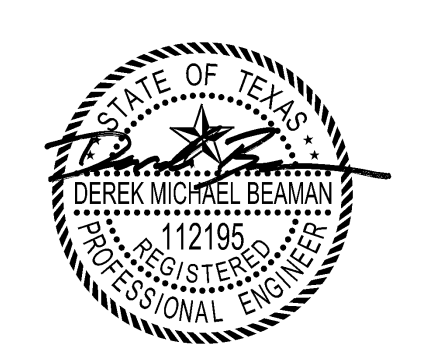


HENRY B. GONZALEZ CONVENTION CENTER
800 EAST MARKET ST.
SAN ANTONIO, TX 78205

CD SET
NOVEMBER 19, 2013

REVISIONS

NO.	DATE	DESCRIPTION
04	04/24/2013	Structural Bid Package
06	11/20/2013	Steel Mill Order Package
12	07/19/2013	Design Development
13	08/30/2013	3rd Set
29	11/19/2013	CD Set

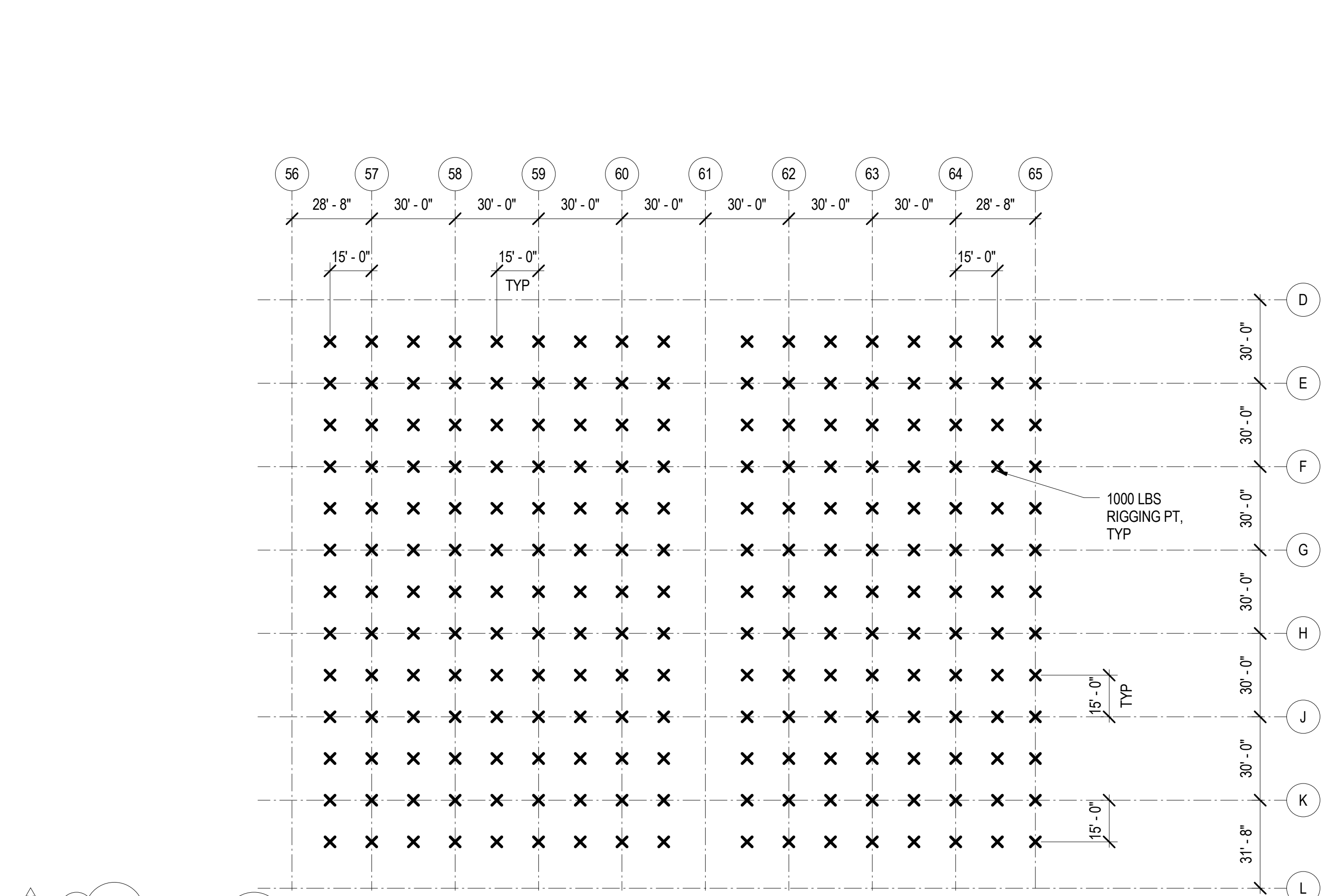


PROJECT NO: 12-3606-00
ISSUED BY: MKA
ISSUED DATE: 04/24/2013

LOAD DIAGRAMS

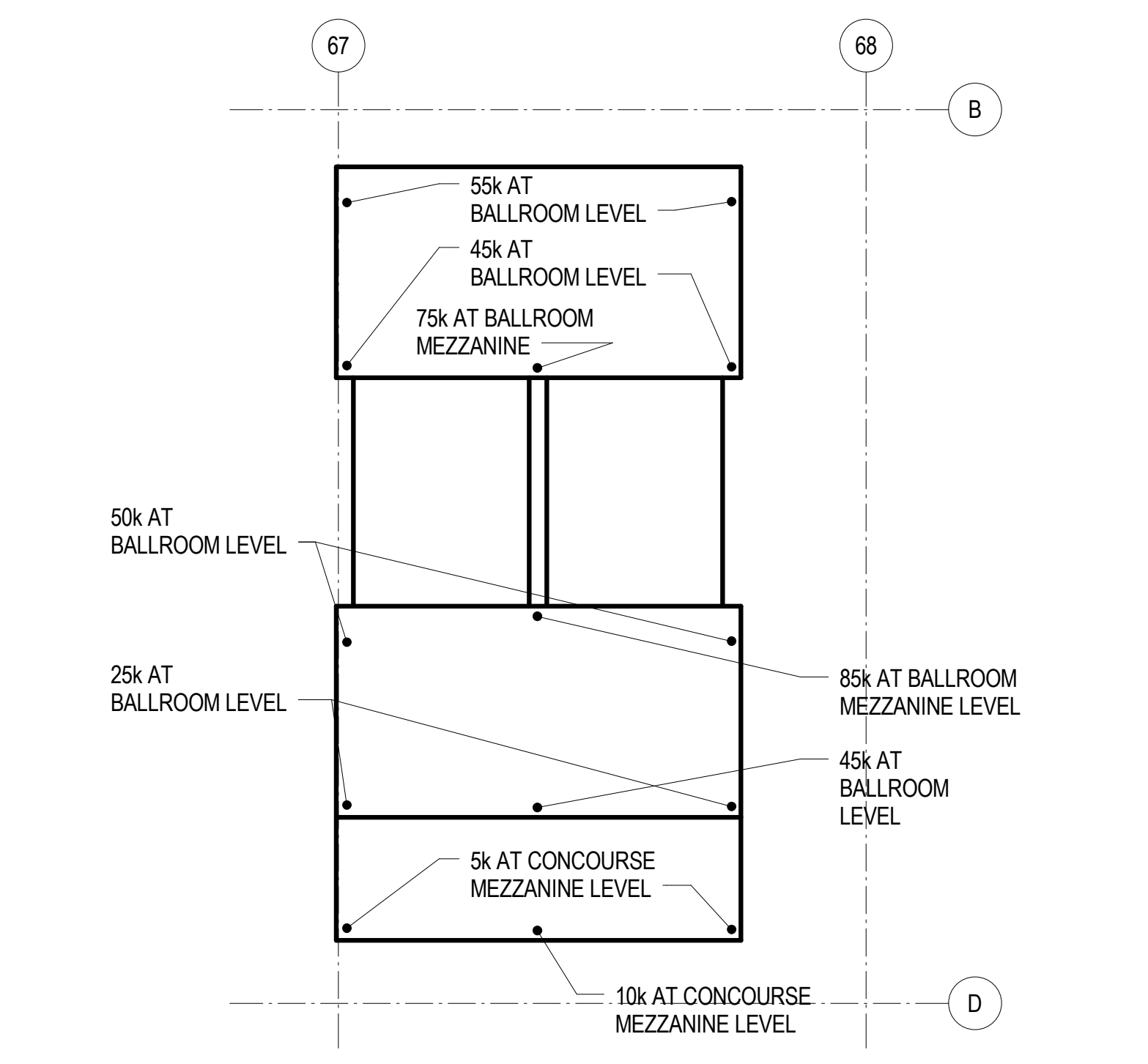
SHEET TITLE: LOAD DIAGRAMS
DISCIPLINE: CATEGORY: SUB-CATEGORY: SHEET

S014

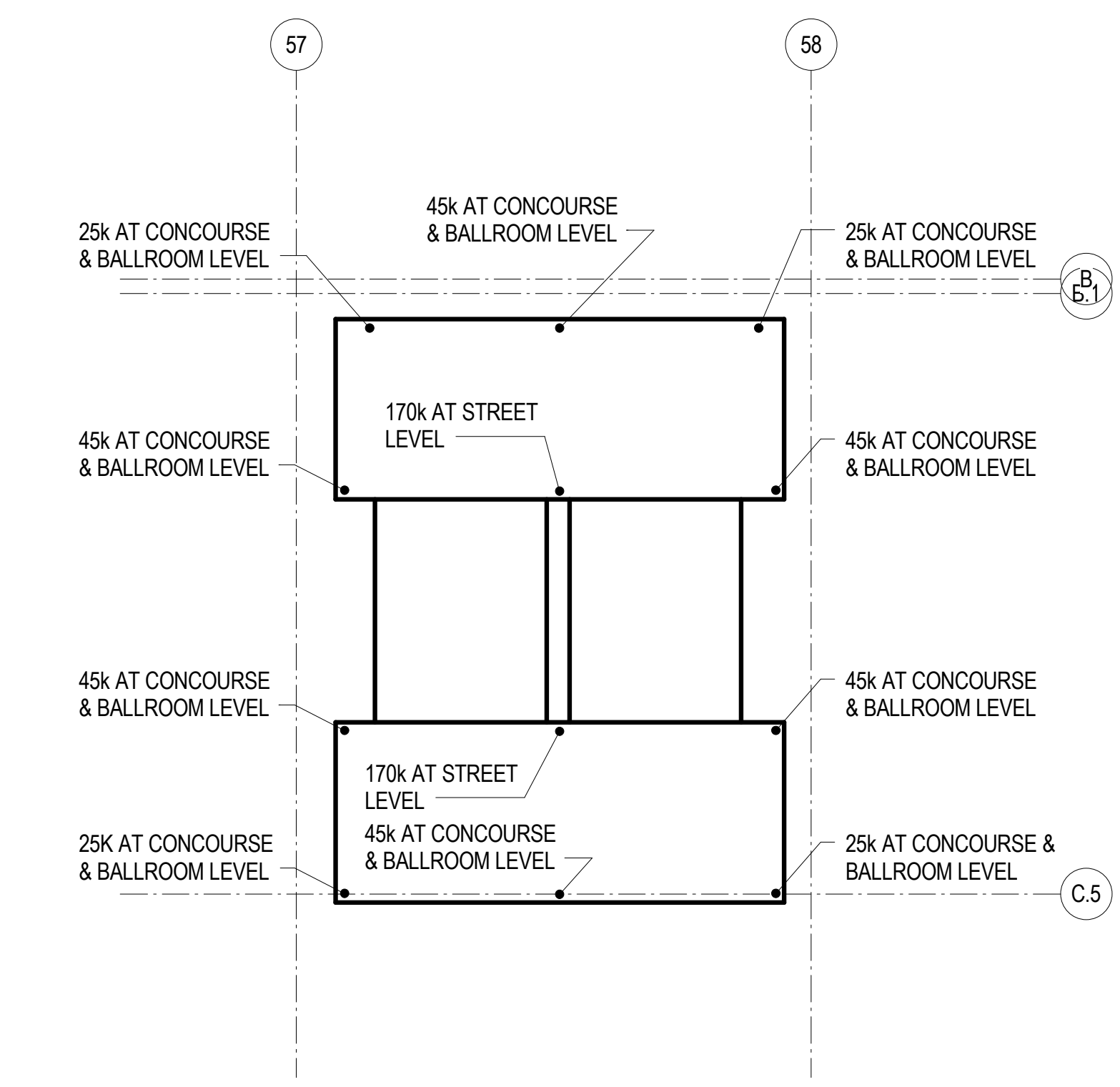


- NOTES:**
- SEE 14/S738 FOR THE RIGGING CONNECTION DETAIL.
 - THE PRIMARY STRUCTURE IS DESIGNED TO SUPPORT ALL OF THE INDICATED RIGGING LOADS SIMULTANEOUSLY.
 - THE INDICATED RIGGING LOADS ARE VERTICAL LOADS APPLIED ALONG THE BOTTOM CHORD LEVEL.
 - THE MAXIMUM NON-VERTICAL LOAD AT THE BOTTOM CHORD LEVEL IS 500-LBS AT A MAXIMUM ANGLE OF 45° FROM VERTICAL.

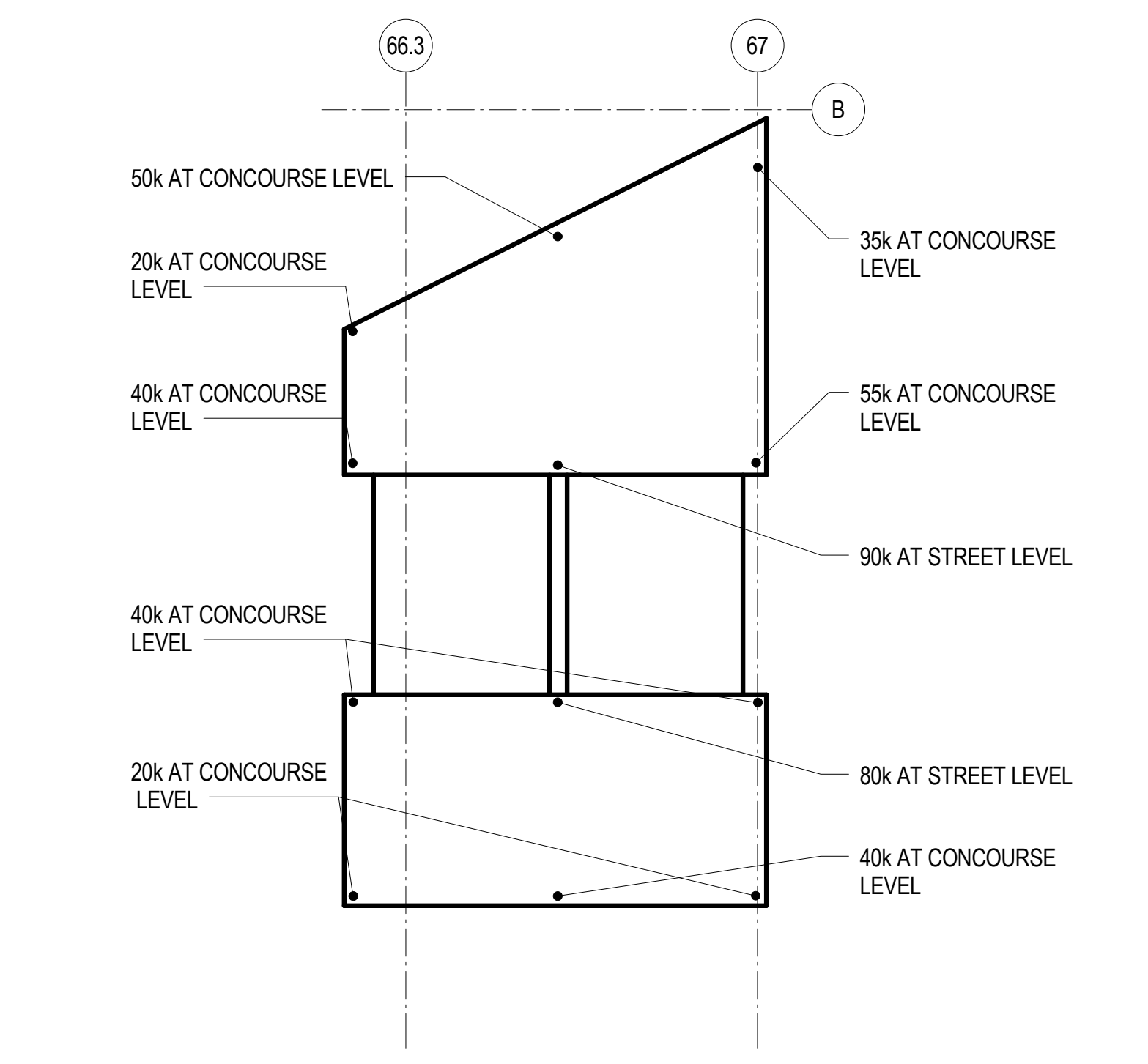
8 BALLROOM RIGGING LOADS
1/32" = 1'-0"



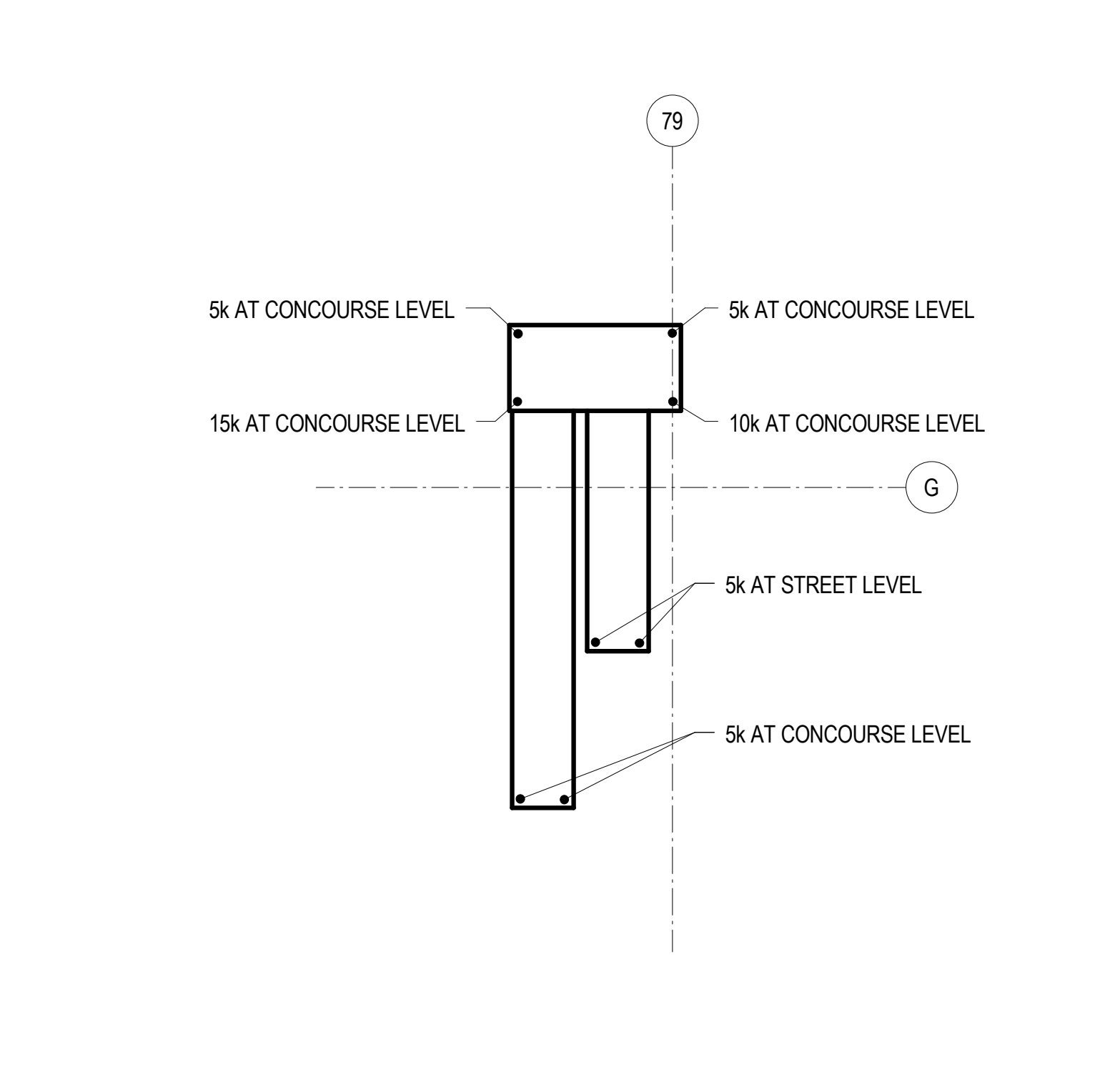
12 STAIR 2 LOADS (EAST OF GRID 67)
1/8" = 1'-0"



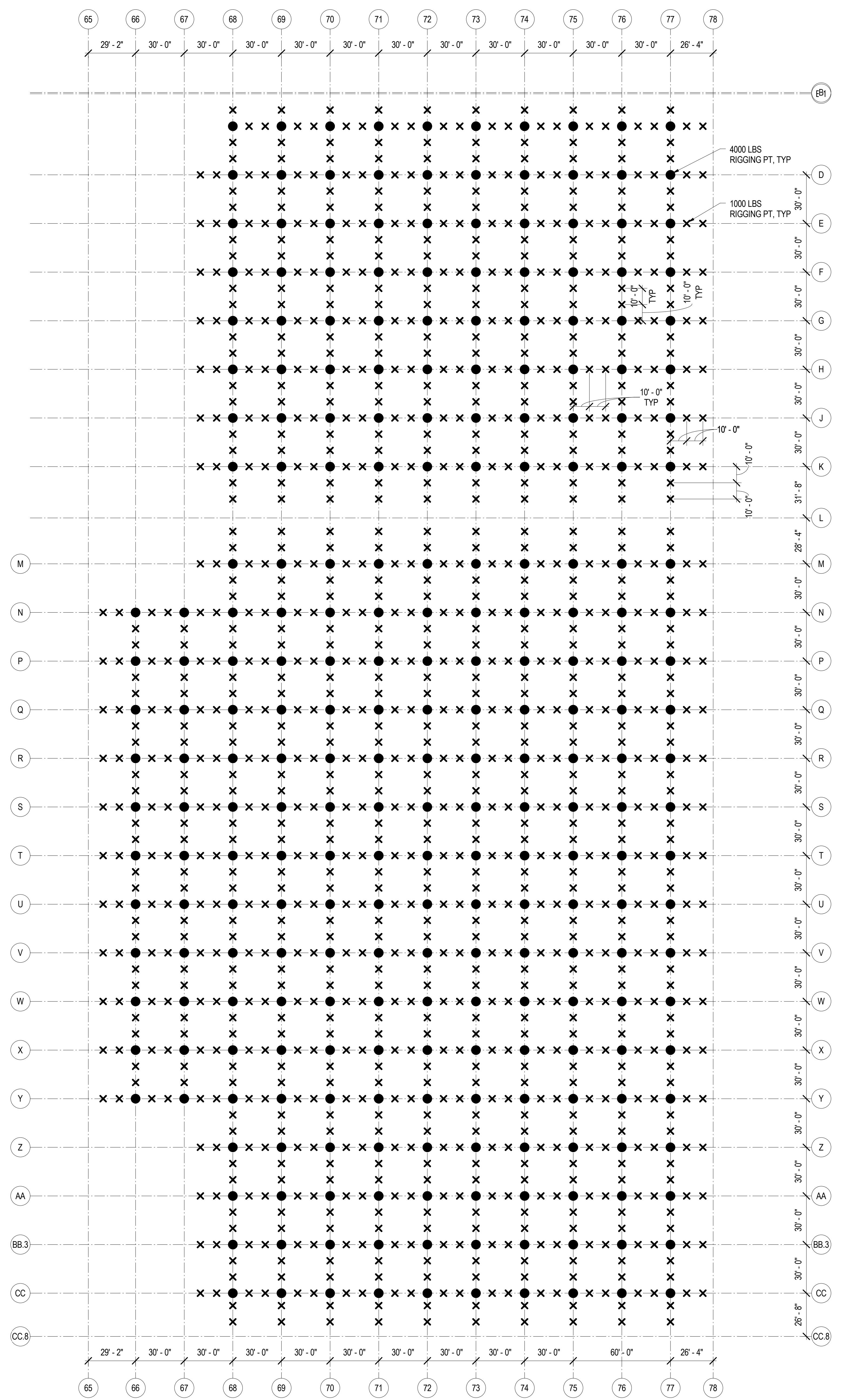
17 STAIR 1 LOADS
1/8" = 1'-0"



13 STAIR 2 LOADS (WEST OF GRID 67)
1/8" = 1'-0"



18 STAIR 9 LOADS
1/8" = 1'-0"



- NOTES:**
- CONNECTION OF RIGGING TO STRUCTURAL STEEL MEMBERS SHALL BE PROVIDED BY THE RIGGING CONTRACTOR. NO PERMANENT FIXTURES ARE INSTALLED AS PART OF THE PRIMARY STRUCTURE.
 - THE PRIMARY STRUCTURE IS DESIGNED TO SUPPORT ALL OF THE INDICATED RIGGING LOADS SIMULTANEOUSLY.
 - THE INDICATED RIGGING LOADS ARE VERTICAL LOADS APPLIED ALONG THE BOTTOM CHORD LEVEL.
 - THE MAXIMUM NON-VERTICAL LOAD AT THE BOTTOM CHORD LEVEL IS 500-LBS AT A MAXIMUM ANGLE OF 45° FROM VERTICAL.
 - 1000-LB RIGGING LOADS MAY BE APPLIED AT THE TOP CHORD OF THE TRUSSES DIRECTLY ABOVE THE LOCATIONS INDICATED AT THE BOTTOM CHORD. THE LOAD AT THE TOP CHORD MAY BE APPLIED IN ANY DIRECTION.

20 EXHIBIT HALL AND MULTIPURPOSE HALL RIGGING LOADS
1/32" = 1'-0"