



# Technical Specifications Package

San Antonio's ideal venue for performing arts, concerts, multimedia presentations and special events.



## **Overview**

The Lila Cockrell Theatre (LCT), named after a former Mayor of San Antonio, is located in the northeast corner of the Convention Facilities' complex. The Convention Facilities rest in the shadow of the soaring "Tower of the Americas", a 750-foot tall facility topped with a revolving restaurant and observation deck. This striking complex, a permanent legacy of the 1968 San Antonio World's Fair is one of the reasons why San Antonio is attracting more than 750,000 delegates every year to conventions, business meetings, trade shows and exhibitions.

Although the Theatre was originally designed for traditional performing arts events such as ballet, symphony and drama, a major renovation in 2010 has enhanced its utility as an ideal venue for multi-media presentations, concerts, lectures and general meetings for large attendance convention events. The large elegant entrance lobby is equipped with a box office, ticket drops and concession stands on all audience levels. Seating is divided among three levels: Orchestra -1,392; 1<sup>st</sup> Balcony - 480; and 2<sup>nd</sup> Balcony - 447 for a total of 2,319 comfortable permanent seats. In addition, there is a large accessible area for handicapped guests and their companions.

Located on the river level below the Theatre are two newly renovated meeting rooms. Room 004 opens onto the River Arcade at the Convention Center with a capacity of 290 in 4,300 sq-ft. Room 005 is located within the building and a capacity of 170 in 2,500 sq-ft. Served by new public restrooms and a small catering pantry, these rooms are ideally suited for receptions, as supplemental meeting rooms, and for overflow seating.

This lower level is also the location of a spacious Green Room and seven Dressing Rooms. These latter include two large chorus-size rooms, four smaller principal rooms, and one room dedicated for handicap access. Back-of-house support on this level also includes audio-visual support space.

The main stage is a clear 113 feet wide and 60 feet deep with a proscenium opening of 55'-10" wide by 30'-0" feet tall. The stage apron extends 5'-9" downstage of the fire pocket. The Orchestra Pit is 8'-0" deep in a half-oval shape. It is 62 feet wide at the sides and 15' -10" deep at center. A portable pit-filler platform system extends completely across the pit to extend the stage apron. The platform may be completely removed to expose the Orchestra Pit or used at the Auditorium floor level at approximately 4'-1" below stage level. The stage technical systems consist of an integrated performance audio system, audio-video infrastructure for cameras and projectors, a fully networked stage and architectural lighting system, and a complement of manually-operated counterweight line sets with motorized stage electrics. The details of these systems are outlined in specific detail below. The loading dock is at stage level with two 16' x 16' loading doors. Access to docks is off of Market Street via a driveway pass through the Grand Hyatt Hotel.

*All information is subject to change without notice*



## LILA COCKRELL THEATRE: PHYSICAL SPECIFICATIONS

### Stage Dimensions:

#### Stage size

- 120'W x 60'D wall to wall including all obstructions
- 100'W x 60'D US No Obstructions.
- Depth
  - Plaster Line to Back Wall: 60'-0"
  - Apron from Edge of Stage to Curtain Line: 7'- 0"
- Wings
  - Stage Right: 28'-2" Clear (less 4'-0" Counterweight rigging wall)
  - Stage Left: 32'-2"
  - House Acoustical Shell Wall Storage is located in each wing (upstage). Shell Wall Storage footprint is 9'x7' in each wing and is not removable.

#### Proscenium

- 30'-0" Maximum height
- Width: 55'-10" Maximum

#### Widths

- Typical "leg - to- leg" opening: 45'-0"
- Fire curtain width: 63'-0"

#### Key Distances

- Edge of Stage on CL to-
  - Orchestra Pit rail: 15'-10"
  - 1st row of seats: 20'-0"
  - Cross-aisle: 88'-0"
  - 1<sup>st</sup> row past cross-aisle: 98'- 0"
  - FOH mix / Handicap Seating: 110'-9"
  - Back Wall - 1st Level: 118'-9"
- Lighting-
  - 1<sup>st</sup> Balcony Rail: 87'-0"
  - Spot Booth 2<sup>nd</sup> level: 130'-0"
  - Spot Booth 3<sup>rd</sup> level: 150'-0"
  - FOH Catwalk: 95'-0"
  - Box Booms: 32'-0" – 53'-0"



# Lila Cockrell Technical Specifications Package



## Orchestra Pit

- Area 1,050 sq-ft
- Width: 62'-0"
- Depth from apron: 13'-0" to 15'-10"
- Elevations with filler platforms-
  - Removed: 8'-0" below stage level
  - At house level: 4'-1" below stage level
  - Pit floor load rating : 125 lbs per square foot
  - Default position: House floor level
    - An additional charge of \$850.00 for labor. We require one full day to remove or install the Pit Filler decking. Please allow adequate time for this work. We require that all request be submitted 'in writing' at least (1) month in advance. All requests will depend on existing Bookings and time available.
    - Pit changes and event load ins / load outs cannot occur simultaneously

## Orchestra Shell

- Wenger Diva Orchestra Shell
- Assembled by house crew if schedule permits during normal business hours
- Normal functionality of stage is limited while shell is out
  - Due to clouds only X-Ray / Par Bars available upstage of first electric
  - Severely hampered to no fly or rigging available while orchestra walls and clouds are out
- 35' deep by 25' at most narrow, 45' at most wide

## Auditorium Specifications:

### Seating

- 3 Levels of seating, 2283 total permanent seats
  - Orchestra Level – 1356 Seats
    - 36 additional available for ticketed events by taking out AV Platform
  - 1<sup>st</sup> Balcony – 480 Seats
  - 2<sup>nd</sup> Balcony – 447 Seats
- Max of 40 chairs can be placed in Orchestra Pit at Audience Level
  - 40 person max in pit if appropriately spread out
- ADA Seating



# Lila Cockrell Technical Specifications Package



- Orchestra Level: 4 Wheel Chair Spaces, 13 Flip Arm Chairs, ADA Booth for 11 Wheel Chairs with Companion
- 1<sup>st</sup> Balcony: ADA Seating Area for 12 Wheel Chairs with Companion, 3 Flip Arms Seats
- 2<sup>nd</sup> Balcony: 4 Flip Arm Chairs

## ADA Booths

- 2 booths on either side of control booth, only accessible from lobby, behind cross aisle
  - Both booths are 30' by 6'
- Both booths have compliment of red ADA friendly chairs
- Part of or entire booths can be used for AV positions
  - It is impendent upon the client to be aware of the ADA needs of their attendees before deciding to close off part of or an entire booth
  - When part of a booth is used but the rest is still open for ADA attendees all cables must be taped down and out of the way to avoid trip hazards
- Ideal positions for projectors with long throw lenses to cross shoot to built-in screens
  - SR booth: 130' throw to screen, 200' cable run from SL company switch
  - SL booth: 125' throw to screen, 270' cable run from SL company switch
- 15a circuit in each booth
- 1 HD-SDI line near control booth
- 110' 9" from stage lip

## Cross Aisle

- Starts at first entrances to auditorium connecting each set of doors
- 88' from Stage Lip
- 150' to 250' cable needed for cable runs from SL company switch
- Approximately 10' wide
  - AV equipment, tables and chairs can be placed in cross aisle provided there's at least 6' of clearance for fire code

## Control Booth

- Located between ADA booths across auditorium from stage
- Contains permanent house audio and lighting positions
- 110' 9" distance from stage lip
- 15a circuit, DMX, eDMX, 2 Ethernet tie lines, 14 XLR tie lines
  - All tie lines connect to SL rack



# Lila Cockrell Technical Specifications Package



- 6 of the XLR tie lines are connected to the SL rack via patch in AV Basement

## AV Platform

- 12' by 12' platform for temporary AV positions
  - Orchestra Level, between cross aisle and control booth
  - 15a circuit, DMX, eDMX, 2 Ethernet tie lines, 14 XLR tie lines available from control booth
    - All tie lines connect to SL rack
    - 6 of the XLR tie lines are connected to the SL rack via patch in AV Basement
  - 250' cable recommended for all cable runs from stage to AV platform
  - AV platform sits 98' from stage lip

## Audio Systems:

### Permanent Mix Position

- Control Booth, located at the rear main floor under balcony 3' above audience
- Only accessible through the lobby
- 2 10" pull conduits located below and connect to orchestra pit for temporary cabling runs
  - Conduits only accessible when pit is raised
- Tie lines
  - All tie lines connect to SL rack
  - 14 XLR
    - 6 of the XLR run to AV basement which patches to SL rack
  - 2 Ethernet
  - All tie lines are accessible from temporary mix position (AV Platform)
    - See AV Platform in Auditorium Specifications for more details

### Loudspeaker system

- Center Cluster (Mono)
  - 11 box JBL Vertec (VT4887ADP) powered line array
    - Located in speaker pocket above stage
- Sub Cluster (Mono)
  - 5 JBL Vertec VT4881ADP
    - Located in speaker pocket above stage
    -



# Lila Cockrell Technical Specifications Package



- Orchestra & 1st Balcony Front Fills (Stereo)
  - 2 Fitzmaurice TLAH PRO Speakers
    - Located performer level to the left and right of the stage
- Stage Lip Fills (Stereo)
  - 4 EAW cabinets powered by 2 QSC amps
    - Located at the edge of the stage lip
- 2nd Balcony Delays (Mono)
  - 3 EAW cabinets powered by 1 Crown amp
    - Located on the ceiling above the front edge of the 2nd balcony
- All speakers are delayed and balanced with an inline Soundweb system
  - Soundweb can take signal for each speaker or a simple mono or stereo mix and will appropriately matrix out to the speakers

## House Sound Options and Specifications

- Basic Sound Package (included in theatre rental)
  - Ashley Stage Mixer at SL rack
    - 6 mono input
      - Located around stage for easy access
    - 1 stereo input at SL rack
      - RCA connection to CD player in rack but can be used for other devices
    - 1 stereo output to loudspeaker system via soundweb
    - 1 mono output for stage monitors and/or recording
  - Client or their AV company can patch in their own board to the Stage Mixer
    - Patch fee applies
  - 2 Stage Monitors, 3 wired handheld microphones and CD player included with rental
- Enhanced Sound Package
  - Yamaha CL5 72 Channel Mixing console
    - (2) Rio 32 Racks located onstage with 64 inputs and 32 outputs
      - 9 outputs are matrix mixed to loudspeakers and backstage monitors to send individual signals to each channel
    - (1) Rio 1608 is Located at mix position with 16 inputs and 8 outputs
    - Rack connected to board in permanent mix position via Dedicated DANTE Network
    - 80 microphone connections located around stage and orchestra pit via 16 channel MASS multi-pin connector stage boxes/snakes.



# Lila Cockrell Technical Specifications Package



- Split outputs as well as DANTE network switch available for onstage monitor board / multitrack recording of stage mic connections
- A CD Player is located at mix position
- 12 Shure Wireless ULX4D Receivers are connected to Yamaha CL5 via DANTE network
  
- Patches
  - Connections to loudspeaker system and backstage / FOH speakers available to AV contractors to send individual signals to each channel
  - Patch fees apply
  
- Other hybrid options available depending on production needs.

## Audio Inventory

- Microphones
  - Basic Microphones
    - 8 x Shure SM48S
    - 9 x Shure SM58
    - 8 x Shure SM57
    - 2 x Shure SM77
    - 27 x Audio Technica AT831b (Wired Lav + Beltpack)
    - 19 x EV MC300
    - 19 x EV N/D367
    - Audix Drum Mic Kit
      - 2 x Audix SCX1-C (Overhead Mics)
      - 1 x Audix D6 (Kick Mic)
      - 3 x Audix D2 (Tom Mics)
      - 1 x Audix i5 (Snare Mic)
  - Premium Microphones
    - 10 x Audix OM6
    - 2 x Shure SM52A Beta
    - 10 x Shure SM81
    - 4 x Shure KSM137
    - 2 x Shure KSM27
    - 2 x Shure KSM44
    - 2 x Shure KSM9
    - 4 x Shure KSM32
    - 5 x Shure SM98A





# Lila Cockrell Technical Specifications Package



- 4 x Beyer Dynamic M500
- 4 x Beyer Dynamic M69
- 2 x Sennhieser MD421
- 7 x Crown PCC 160
- 4 x Crown PZM-6LPB w/ PX-18 Power Supply
- 4 x AKG D 222 EB
- 4 x AKG C 535 EB
- 4 x C-Ducer CX Mono PSM Kits
  
- Wireless Systems
  - Systems
    - Shure ULXD4 Array handles up to 12 wireless mics  
Connected TO FOH via DANTE Network
    - 1 Portable Rack with 3 ULXD4 Wireless Kits
    - 4 x ULX P4 Wireless Kits
  - Wireless Microphones
    - 15 x Shure ULXD2 Handheld Transmitters with Beta 87 C Capsules (For Use w/ ULX D4 systems)
    - 15 x Shure ULXD1 Belt Pack transmitters with WL 184 Capsules (For Use w/ ULX D4 systems)
    - 4 x ULX 2 Handheld Transmitters with SM87 Capsules (For Use w/ ULX P4 systems)
    - 4x ULX 1 Belt Pack Transmitters with WL 185 Capsules (For Use w/ ULX P4 systems)
    - 4 x Shure WH20TQG Headworn mics, can be used with any belt pack.
  
- Stage Monitors
  - 8 x Myer UM-1P
  - 2 x Myer USM-1P
  - 4 x Mackie SR 450
  
- Direct Input Boxes
  - 1 x Radial J48 Active Direct Box (1/4" Mono)
  - 1 x Radial JPC Stereo PC DI Box (Stereo RCA)
  - 6 x Countryman Type 85 FET Direct Box (1/4" Mono)
  
- 3 Inline Transformers
  
- Audio Control Industrial Third Octave Real Time Spectrum analyzer
  
- Whirlwind Active Press Feed Box (2 x Inputs, 4 x Line out, 12 x Mic out)



# Lila Cockrell Technical Specifications Package



- Playback and recording
  - CD player (CDP): Tascam CD-200.
  - CD Player/Recorder (CDR): Tascam CD-RW900SL

## Other Audio in LCT

- Backstage / Dressing rooms
  - Ceiling speakers in every room for performers and crew
  - Each dressing room and green room has individual volume controls
- FOH/Lobby
  - Ceiling speakers in all areas for attendees
  - Volume Control in FOH manager's position between lobby & ADA Booths
- River Level
  - 004 & 005
    - Sound system for meetings
    - Each room has 2 mic and 2 line inputs
    - Each room has small wall plate mixer
    - Can send signals to adjacent hallways and outdoor patio
    - Can receive signals from theatre sound system

## Video Systems and Equipment:

### Projectors

- (2) Panasonic PT-RZ120LBU 12K Lumen 16:9 1920 x 1200 DLP Projectors
  - Pre-focused to screens
- (2) Decimators for D/A of signals to projectors. SDI and HDMI input to projectors provided by a second decimator at SL, SR, Sound booth positions.

### Projection Screens

- (2) Permanent motorized roll up screens installed to the Left and Right of the stage
- 16:9 Ratio
- 148" X 264" or 12' 4" X 22'
  - Approximately 25' diagonal
- White Matte Surface
- Use of screens included in rental.
  - Ideal placement for projectors is in ADA booths (see Auditorium specifications)
    - Long throw lens (5.5 or above) needed for 125' & 130' throws
    - Cross shooting from SL to SR and vice versa



# Lila Cockrell Technical Specifications Package



- Keystone needed
- 200' + 270' cable runs from DSL company switch

## LCD Displays

- 6 LCD Screens
  - 2 in Lobby
  - 1 in each stage rack, downstage left and right
  - 1 in green room
  - 1 in AV Basement
- All Screens take signal from house Robocam
  - Robocam positioned in first balcony rail
  - Robocam controlled from AV basement
- Video switcher which controls screens cannot take outside signal
  - Green room is close enough to AV Basement patch panel for a SDI home into an HDMI converter to feed the screen.

## Video Infrastructure

- 12 available camera input plates throughout the theatre
  - 2 in balcony rail
  - 2 in audience seating
  - 1 in SR ADA Booth
  - 2 on down stage wall
  - 2 in orchestra pit
  - 2 in 004
  - 2 in 005
- Connections on plates
  - 2 cat6 Ethernet
  - RG/6 coaxial
  - XLR for com
- All connections terminate in AV basement

## Communications:

### Intercom

- Main Intercom "A, B, C, D" channels
  - Plates positioned all over the theatre
  - Powered by Clearcom 4-CH Master Station
    - Located in SL Rack
    - Cannot remove from rack, but can be bypassed



# Lila Cockrell Technical Specifications Package



- Headsets, belt-packs, stations and other accessories available
- Camera plate com
  - Additional patch points in SL rack and AV Basement
- FOH catwalk com
  - 4 com lines from SL rack to FOH catwalk
- Dressing rooms and green room
  - Clear com plates for two way communication in all rooms on a shared channel
- AV Basement
  - All Coms terminate in AV Basement with other video infrastructure and tie lines
  - SOP house tech ties into production show channel for ease of communication
  - As all video lines and tie lines terminate in AV basement the space is available to operators and techs as needed

## Performers / Audience Communication

- Program
  - FOH & Backstage
    - Individual mutes for each area
    - Each area can take individual mono signals
    - By default takes signal from theatre mix
  - 004, 005, river level hallway & outdoor patio
    - Can take program input from theatre mix or auxiliary mono signal
- Paging
  - One way communication to FOH or Backstage
    - Page mic in SL & SR racks for calling attendees or performers
    - FOH & Backstage routing selectable via thumb switch
    - Chime button also available
  - River Level
    - Page mic cannot be routed to meeting rooms & river level areas
    - Additional mic can be set to send pages to meeting room system

## Hearing Assistance

- Single Channel RF (216 Mhz) module in control booth
  - Mono signal must be patched
  - Client responsible for distributing & collecting audience modules



## Lighting Systems:

### **Stage Lighting**

- ETC-NET3 lighting network
  - 4 universes
    - 1: Stage Lighting
    - 2: House Lighting
    - 3: Empty
    - 4: Empty
  - Ethernets & 5pin DMX Connections
  - Control nodes available to extend DMX signals from network
- 440 dimmable circuits for traditional lighting
  - House compliment of Strand 4 Leko, Parnell & Cyc lights available
    - Lenses, gel holders, apertures & other accessories available
    - LCT does not provide color gels
- Stage pin, DMX & Ethernet connections distributed around theatre
  - FOH Catwalk
  - Balcony Rail
  - House tormentor slots / side boxes
  - Over-stage electrics
  - Gridiron drop-boxes
  - Stage wall boxes
  - Stage floor pockets
  - Orchestra pit

### **House Lighting**

- ETC-NET3 lighting network
- Audience lights & house decorative lights are controlled in Universe 2
  - Audience lights are dimmable, decorative lights are fixed

### **Follow Spot Light Booth**

- (3) Juliet Cyrano 2500 HMI 8.25" diameter follow spots, on balcony level



## Lighting Control

- House lighting Console
  - ETC-GIO 4K with 2x20 standard fader wing
  - Located in control booth with audio permanent mix position
  - Board may not be moved
  - Use of board included with rental
  - NET3 radio focus remote available
- Console receptacle stations
  - LCD panels with simplified lighting controls
    - Separate controls for house, lobby, and stage
    - Stage lights can take up to 9 presets from lighting designers
  - Located around theatre
    - SL & SR Racks
    - Control Booth
    - House Manager Position
    - AV Basement
- Work lights controls
  - SL & SR racks
  - Control Booth
  - Loading Rail
  - Mid-Loading rail
  - Operating rail



# Lila Cockrell Technical Specifications Package



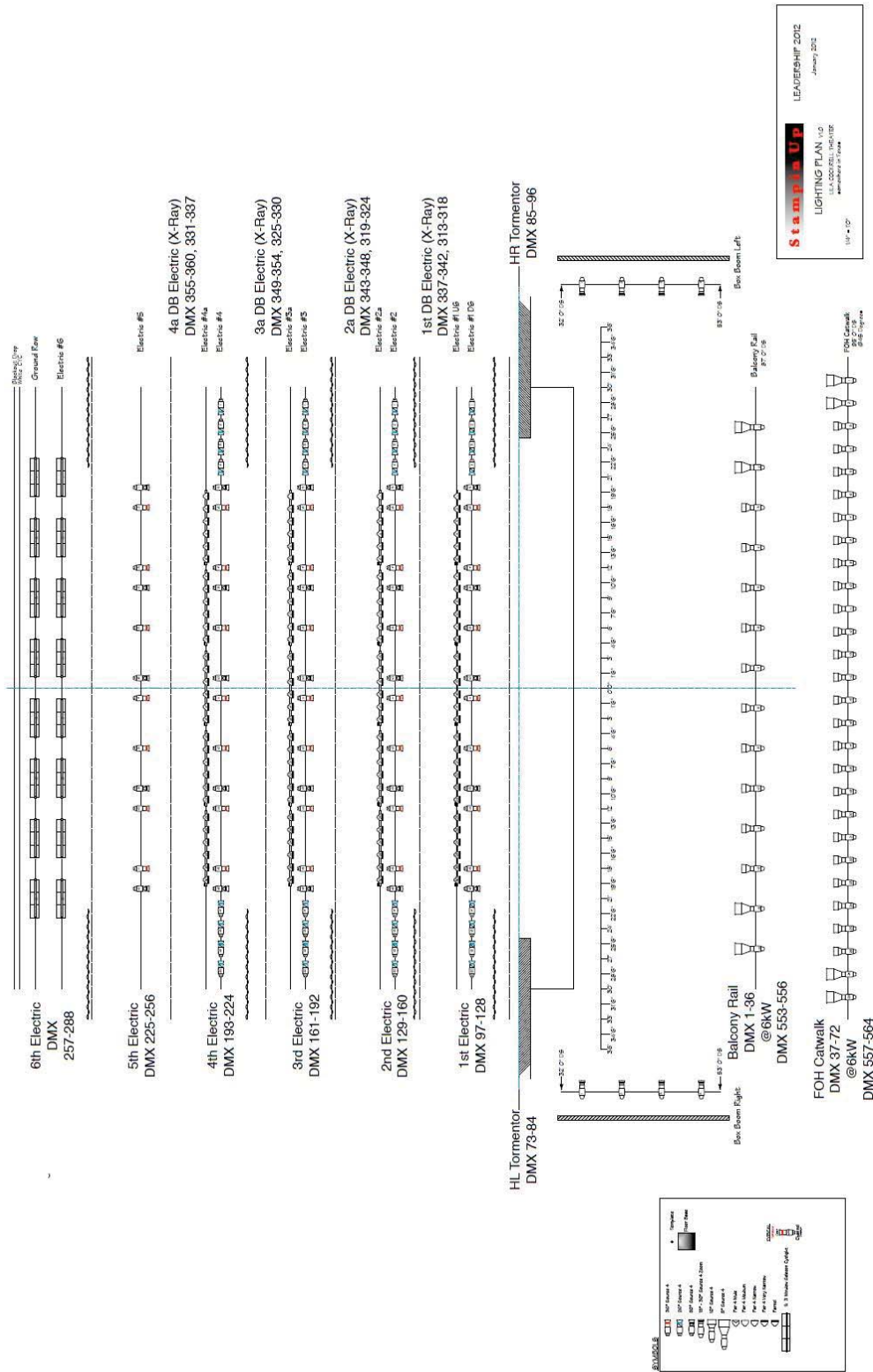
## Circuit Distribution

All circuits are 2.4kW with stage-pin type connectors unless noted otherwise. FOH circuits begin house right / Electrics 1-6 circuits begin stage left

Location	Circuit #
Balcony Rail	1-36
Balcony Rail @ 6kW	553-556
FOH Catwalk	37-72
FOH Catwalk @ 6kW	557-564
HL Tormentor Slot	73-84
HR Tormentor Slot	85-96
1 <sup>st</sup> Electric – (PARNELS cir DB 337-342, 313-318)	97-128
2 <sup>nd</sup> Electric	129-160
2a Electric	DB 343-348, 319-324
3 <sup>rd</sup> Electric	161-192
3a Electric	DB 349-354, 325-330
4 <sup>th</sup> Electric	193-224
4a Electric	DB 355-360, 331-337
5 <sup>th</sup> Electric	225-256
6 <sup>th</sup> Electric	257-288
Gridiron Drop Boxes (16 @ 6 circuits ea.)	289-384
Stage Floor (Cyc) Pockets (4 @ 4 circuits ea.)	385-400
DSR Wall Box	401-404
US Wall Boxes (5 @ 4 circuits ea.)	405-424
DSL Wall Box	425-428
Orchestra Pit Wall Boxes (3 @ 4 circuits ea.)	429-440



# Lila Cockrell Technical Specifications Package



**Stamp Up**  
LEADERSHIP 2012  
January 2012  
LIGHTING PLAN 1:0  
1/14 • 12'





# Lila Cockrell Technical Specifications Package



## Fixture Inventory – by house positions

State Lighting Fixtures - by house position

### FOH

			Frame size
Balcony Rail	(10) S-4 10°	750w	12"x12"
	(4) S-4 5°	750w	14"x14"
Ceiling	(24) S-4 10°	750w	
	(4) S-4 5°	750w	
Box Boom HL	(4) S-4 Zoom 15 - 30°	750w	7.5"x7.5"
Box Boom HR	(4) S-4 Zoom 15 - 30°	750w	
Follow Spot Booth	(3) Juliet Cyrano 2500 HMI		8.25" dia, Balcony level

### Stage

1st Electric*	(5) S-4 50°	750w	6.25"x6.25"
	(7) S-4 36°	750w	6.25"x6.25"
	(8) S-4 26°	750w	6.25"x6.25"
	(30) S-4 Parnels	575w	(5) 6 lamp bars, fixtures hardwired into bar, bars can be removed from batten 7.5"x7.5"

\*1st Electric is a Tri-batten; down stage pipe holds Lekos/upstage pipe holds Parnel bars.

2nd Electric, 3rd Electric, 4th Electric; each have:

(5) S-4 50°	750w
(7) S-4 36°	750w
(8) S-4 26°	750w

2a Electric, 3a Electric, 4a Electric; each have:

(30) S-4Parnels	575w	(5) 6 lamp bars
-----------------	------	-----------------

5th Electric	(5) S-4 50°	750w
	(7) S-4 36°	750w

6th Electric (8) Selecon Aurora 3 Way Cyc lights, 1K FFT lamp per cell - frame size; 12"x12 3/8"

Stage Level (8) Selecon Aurora 3 Way Cyc lights, 1K FFT lamp per cell - ground row @ stage level

Color frames provided for each fixture, but no color. House does not provide color.  
Call for additional information and updated inventory

## Network and DMX Nodes:

- 12 @ ETC 2-port Net3 ACN output gateway w/ C-clamp
- 1 @ ETC 2-port Net3 CACN input gateway w/ C-clamp
- Portable Network Node/interface rack with
  - Power Supply/Conditioner
  - 4 @ DMX out
  - 4 @ ETC-Net



## Stage Rigging and Fly Specifications:

### **Fly System**

- 48 available manually operated single-purchase counterweight line sets with 1000lb capacity
  - Not included are 3 traveler curtain line sets and 3 orchestra shell cloud line sets, available for use but goods cannot be removed
- 8 dedicated stage electrics are served with fixed speed motorized hoists
  - 6 overhead stage electrics
  - 2 wing (SL & SR) electrics
- 2 dedicated side tab curtains are served with fixed speed motorized hoists
- Main Curtains is served with variable speed motorized hoists
  - Main Curtain operates as both guillotine and traveler
  - Lift and travel speeds are controlled at user-selectable rates
- Motorized equipment can be controlled at SR panel or via pendant in the fly rail
  - Qualified operators required for motorized equipment

### **Fly System Specifications**

- Gallery Elevations
  - Operating Rail (Fly-rail): 35'-0"
  - Mid-loading Rail: 55'-0"
  - Loading Rail: 75'-0"
- Arbors/Counterweights
  - Length: 7'-0" (typical)
  - Capacity: 1000 Pounds
  - Counterweight
    - 1-1/4" thick: 375 @ 20 lbs.
    - 1-7/8" thick: 750 @ 30 lbs.
- Travel / Trims
  - In-trim: 4'-0"
  - Travel
    - Typical: 74'-0"
    - Travelers/legs (truss battens): 73'-0"
    - Valance (set #1): 38'-0"
    - Sets #2, 3, & 4: 67'-0"



## Stage Rigging

- Steel Elevations
  - Top of Gridiron: 80'-6"
  - Top of Head Beam: 86'-6"
  - Bottom of Loft Beam: 88'-6"
- Loft Wells
  - Distance between: 12'-0"
  - Opening: 10-1/4" clear
- No rigging points are available DS of Main Drape (1'-8" from fire pocket).
- No rigging points available in FOH.

## Policies

- All rigging points and weights must be submitted and approved by Stage Manager prior to load-in.
- The Fire Pocket must remain clear of all obstructions at all time.
- All span sets must be backed up with steel cables, ACSR.
- Qualified personnel required for all fly and rigging operation



# Lila Cockrell Technical Specifications Package



## LINE SET SCHEDULE

RIGGING LINESET SCHEDULE -- DIMENSIONS FROM DATUM							
ID	DESCRIPTION	LOCATION	CAPACITY [lbs]	BATTEN LENGTH	TYPE	HOIST MOUNTS	NOTE
0	DATUM	0' - 0"					
FC	FIRE CURTAIN	0' - 4"	1500	63' - 7"	MOTORIZED	GRID	EMERGENCY RELEASE W/ HYDRAULIC GOVERNER
1	VALANCE	1' - 0"	1000	65' - 0"	MANUAL CW	GRID	REDUCED ARBOR TRAVEL
MAIN	MAIN DRAPE	1' - 8"	1200	72' - 0"	MOTORIZED	--	TRACKED; MOTORIZED DRAW
2	HOUSE TORM LEGS	2' - 6"	1000	65' - 0"	MANUAL CW	--	WALK-ALONG TRACKS; REDUCED ARBOR TRAVEL
3	UTILITY	3' - 0"	1000	65' - 0"	MANUAL CW	--	REDUCED ARBOR TRAVEL
4	UTILITY	3' - 6"	1000	65' - 0"	MANUAL CW	--	REDUCED ARBOR TRAVEL
1E	1st ELECTRIC	4' - 9"	3000	63' - 0"	MOTORIZED	GRID	TRI-BATTEN; CABLE CRADLE PICK
5	UTILITY	6' - 0"	1000	65' - 0"	MANUAL CW	--	--
6	UTILITY	7' - 0"	1000	65' - 0"	MANUAL CW	--	--
7	UTILITY	7' - 6"	1000	65' - 0"	MANUAL CW	--	--
8	SHELL CEILING	8' - 6"	2500	65' - 0"	MANUAL CW	--	MAY NOT BE REMOVED
9	UTILITY	9' - 6"	1000	65' - 0"	MANUAL CW	--	--
10	BORDER	10' - 0"	1000	65' - 0"	MANUAL CW	--	--
11	LEGS #1	10' - 6"	1000	72' - 0"	MANUAL CW	--	TRUSS BATTEN
12	UTILITY	11' - 0"	1000	65' - 0"	MANUAL CW	GRID	--
13	UTILITY	11' - 6"	1000	65' - 0"	MANUAL CW	--	--
2E	2nd ELECTRIC	12' - 6"	2500	63' - 0"	MOTORIZED	GRID	DOUBLE PIPE; CABLE CRADLE PICK
14	ELECTRIC 2a	13' - 6"	1500	65' - 0"	MANUAL CW	--	--
15	UTILITY	14' - 0"	1000	65' - 0"	MANUAL CW	--	--
16	UTILITY	15' - 0"	1000	65' - 0"	MANUAL CW	--	--
17	UTILITY	15' - 6"	1000	65' - 0"	MANUAL CW	--	--
18	UTILITY	16' - 6"	1000	65' - 0"	MANUAL CW	--	--
19	SHELL CEILING	17' - 6"	2500	65' - 0"	MANUAL CW	--	MAY NOT BE REMOVED
20	BORDER	18' - 6"	1000	65' - 0"	MANUAL CW	--	--
21	MIDSTAGE TRAVELER	19' - 0"	1000	72' - 0"	MANUAL CW	--	TRUSS BATTEN
22	UTILITY	19' - 6"	1000	65' - 0"	MANUAL CW	GRID	--
23	UTILITY	20' - 6"	1000	65' - 0"	MANUAL CW	--	--
3E	3rd ELECTRIC	21' - 6"	2500	63' - 0"	MOTORIZED	GRID	DOUBLE PIPE; CABLE CRADLE PICK
24	ELECTRIC 3a	22' - 6"	1500	65' - 0"	MANUAL CW	--	--
25	UTILITY	23' - 0"	1000	65' - 0"	MANUAL CW	--	--
26	UTILITY	24' - 0"	1000	65' - 0"	MANUAL CW	--	--
27	UTILITY	25' - 0"	1000	65' - 0"	MANUAL CW	--	--
28	BORDER	25' - 6"	1000	65' - 0"	MANUAL CW	--	--
29	SHELL CEILING	26' - 6"	2500	65' - 0"	MANUAL CW	--	MAY NOT BE REMOVED
30	LEGS #2	27' - 6"	1500	72' - 0"	MANUAL CW	--	TRUSS BATTEN
31	UTILITY	28' - 6"	1000	65' - 0"	MANUAL CW	--	--
32	UTILITY	29' - 0"	1000	65' - 0"	MANUAL CW	--	--
4E	4th ELECTRIC	30' - 0"	2500	63' - 0"	MOTORIZED	GRID	DOUBLE PIPE; CABLE CRADLE PICK
33	ELECTRIC 4a	31' - 0"	1000	65' - 0"	MANUAL CW	--	--
34	UTILITY	32' - 0"	1000	65' - 0"	MANUAL CW	--	--
35	UTILITY	32' - 6"	1000	65' - 0"	MANUAL CW	--	--
36	UTILITY	33' - 0"	1000	65' - 0"	MANUAL CW	--	--
37	UTILITY	34' - 0"	1000	65' - 0"	MANUAL CW	--	--
38	BORDER	35' - 0"	1000	65' - 0"	MANUAL CW	--	--
39	TRAVELER	35' - 6"	1000	72' - 0"	MANUAL CW	--	TRUSS BATTEN
40	UTILITY	36' - 6"	1000	65' - 0"	MANUAL CW	--	--
5E	5th ELECTRIC	38' - 0"	2500	63' - 0"	MOTORIZED	GRID	DOUBLE PIPE; CABLE CRADLE PICK
41	UTILITY	39' - 6"	1000	65' - 0"	MANUAL CW	--	--
42	UTILITY	40' - 6"	1000	65' - 0"	MANUAL CW	--	--
43	UTILITY	41' - 0"	1000	65' - 0"	MANUAL CW	--	--
44	UTILITY	42' - 0"	1000	65' - 0"	MANUAL CW	--	--
45	BORDER	43' - 0"	1000	65' - 0"	MANUAL CW	--	--
46	LEGS #4	43' - 6"	1000	72' - 0"	MANUAL CW	--	TRUSS BATTEN
47	UTILITY	44' - 0"	1000	65' - 0"	MANUAL CW	--	--
48	UTILITY	44' - 6"	1000	65' - 0"	MANUAL CW	--	--
6E	6th ELECTRIC	46' - 0"	2500	63' - 0"	MOTORIZED	GRID	DOUBLE PIPE; CABLE CRADLE PICK
49	UTILITY	48' - 0"	1000	65' - 0"	MANUAL CW	--	--
50	UTILITY	48' - 6"	1000	65' - 0"	MANUAL CW	--	--
51	UTILITY	49' - 0"	1000	65' - 0"	MANUAL CW	--	--
52	UTILITY	49' - 6"	1000	65' - 0"	MANUAL CW	--	--
53	CYC	50' - 6"	1500	65' - 0"	MANUAL CW	--	--
54	BLACKOUT TRAVELER	51' - 0"	1000	72' - 0"	MANUAL CW	--	TRUSS BATTEN; TRACKED; PULL SR
A	SL SIDE ELECTRIC	8' - 0" OFF C	1500	40' - 0"	MOTORIZED	--	--
B	SL TAB MASKING	1' - 0" OFF C	800	40' - 0"	MOTORIZED	--	TWO PARALLEL TRACKS
C	SR SIDE ELECTRIC	8' - 0" OFF C	1500	40' - 0"	MOTORIZED	--	--
D	SR TAB MASKING	1' - 0" OFF C	800	40' - 0"	MOTORIZED	--	TWO PARALLEL TRACKS



# Lila Cockrell Technical Specifications Package



## Drapery Schedule

<u>Set Description</u>	<u>Finished Curtain size</u>	<u>Color</u>	<u>Location</u>	<u>Notes</u>
Valance	61'- 0" W x 12'- 0"H	Crimson	Line Set -1	may not be removed
Main Drape	(2) 36' - 0"W x 34' - 0"H	Crimson	Main Drape	" " " "
Torm Legs	(2) 16' - 0"W x 34' - 0"H	Crimson	Line Set - 2	" " " "
Border	64' - 0"W x 16' - 0"H	Black	LS - 10	flat panel
Border	" x "	"	LS - 20	" "
Border	" x "	"	LS - 28	" "
Border	60' - 0"W x 16' - 0"H	"	LS - 38	" "
Border	x "	"	LS - 45	" "
Borders	(2) " x "	"	-----	(2) spares/storage/fp
Legs	(2) 16' - 0"W x 38' - 0"H	"	LS - 11	(2) flat panels
Legs	(2) " x "	"	LS - 30	" " "
Legs	(2) " x "	"	LS - 46	" " "
Legs	(4) 12' - 0" W x 40' - 0"H	"	-----	(4) spares/storage/fp
Legs	(4) 17' - 0"W x 38' - 0"H	"	-----	" " "
Traveler	(2) 36' - 0" W x 38' - 0"H	"	LS - 21	flat
Traveler	(2) 34' - 0"W x 38' - 0"H	"	LS - 39	"
Traveler	(2) 36' - 0"W x 38' - 0"H	"	LS - 54	"
Side Masking SR	(4) 10' - 0"W x 34' - 0"H	"	SM - D	upstage/downstage track, 41'-0" off CL
Side Masking SL	(4) " x "	"	SM - B	" "
Cyclorama	60' - 0"W x 39' - 0" H	White	LS - 53	seamless flat
	Cyclorama	" x "	Lt. Blue	-----
	sf/ storage			

## Transportation Logistics:

### **Loading Dock**

- Ramp to docks has a 10° angled downgrade, loading bars and extra care should be taken when loading and unloading trucks
- Access is off Stage Left, at stage level with 2 (two) 16'W x 16'H doors.
- The dock has two truck bays and can accept up to 2 51' trailers.
  - The turn is difficult, it's recommended the driver is experienced and plans their turn before bringing trailer in
  - Notify Event Coordinator and Stage Manager of anticipated arrival time
- 31" high, 8' deep dock area.
- One metal dock plate as well as one set of wooden wheel risers is available on site if required.



## Freight Elevator

- 7'-3"D x 5'-11"W x 6'-7"H
- Capacity: 4,000 lbs.
- Located near loading docks, stage left provides access from the stage floor to the lower level areas.
- Use during production is not recommended for noise concerns

## Storage Areas

- Inside docks space 32' X 44' 1400 sq feet.
- Additional storage areas
  - Backstage (onstage behind curtains) & wings
    - Client must be sure movement backstage will not be hampered
  - Lower level when available
- Contact stage manager for specific needs

## Theatre Power:

### **Power Disconnects (Company Switches)**

- 4 @ 400A, 3-phase 120/208V 5-wire (w/ double neutral) located in upstage left wing adjacent to loading door.
- 2 @ 200A, 3-phase 120/208V 5-wire (w/ isolated ground) located in downstage left wing adjacent to loading door and next to freight elevator.
- Switches have Cam-Loc type connectors and internal lugs.
- Requires Facilities Approved Electrical Contractor for Permit and tie-ins. See contractor list.

### **Edison outlets**

- 7 @ 110V/20A isolated circuits on stage
- 2 @ 110V/20A isolated circuits from orchestra pit
- More 110V/15A un-isolated circuits available around theatre.



# Lila Cockrell Technical Specifications Package



## Cable Ramps

- A limited supply of heavy duty cable cover ramps, “yellow jackets,” are available upon request.

## Other Information:

### Policies

- Facility will provide an Event Coordinator to help plan and implement the event at no charge to the renter.
- A “rental day” is defined by the San Antonio Convention Facility as beginning at 6:00 am and ending 12:00 midnight.
- Police & Security
  - Security or Police services must be provided at the expense of the renter.
  - One or more police officers must be hired at the expense of the renter to monitor traffic and access during move-in and move-out times if required.
  - An official representative of the Police Department will determine whether police officers are required or if private security is applicable.
  - The Police Department must approve the number of officers as well as their staffing/patrol locations.
- Management is not responsible for items left in the facility or associated areas.
- Security locks and keys are available (with \$50 deposit per room) to some rooms in the Facility; check with Booking or the Event Coordinator assigned to your event.
- Decorations
  - All decorations must be provided by the Renter must be approved prior to installation.
  - All decorations must be certified fire resistant.
  - All decorations must be removed by the end of the contracted period.
  - Helium balloons and other self-rising items are prohibited inside the Facility.
  - All methods of decoration installation must have prior approval, submitted in writing to the local technical staff, Fire Department and SAPD.
  - Any installation method that would damage the Facility or equipment is prohibited.
  - All decorations that are installed without prior approvals may be confiscated by the management, subject to a charge for their removal.
  - Confetti and any type of glitter are strictly prohibited in the building.



## Directions to the Lila Cockrell Theatre

The Lila Cockrell Theatre is located inside of the Henry B. Gonzalez Convention Center Complex at 900 East Market Street. The Theatre may be found across from the Marriott Riverwalk Hotel and adjacent to The Grand Hyatt Hotel located at the corner of East Market and Bowie Street.

- Coming from the Airport area:
  - Take 281 South to Commerce exit, take a right, go down to South Alamo and take a left. On East Market take another left and the Theatre will be on your right hand side.
- Coming from Houston:
  - Take I-10 West to I-37 North and take the Commerce Street exit, turn left on Commerce street, go down to South Alamo and take a left. On East Market take another left and the Theatre will be on the right hand side.
- Coming from the Medical Center:
  - Take Loop 410 to I-10 East, to I-35 North, take I-37 South to Corpus Christi. Exit Commerce Street off right side, go down three lights to South Alamo and take a left. On East Market take another left and the Theatre will be located on your right hand side.
- The Lila Cockrell Theater Loading Dock is located off Market and Bowie Street at the rear/delivery entrance to the Grand Hyatt Hotel. Accessible through driveway pass-through at Grand Hyatt Hotel.

## Parking

- Autos: the Convention Center Garage is located on the corner of Market and Bowie streets. There are many other lots within walking distance.
- Tractor/ Trailers and Busses
  - “Free Parking” First come... Located under the expressway, I-37 @ Austin Street.
  - Or City Lot; I-37 @ Nolan & Houston Street. (Call 207-8266 for info and charges)
  - Only (1) one trailer may remain on Dock Ramp during the run of event.





# Lila Cockrell Technical Specifications Package



## LILA COCKRELL THEATRE: ADDRESS AND NUMBERS

Regular Office Hours: Monday - Friday 7:45 AM - 4:30 PM

Mailing Address: San Antonio Convention Facilities  
Lila Cockrell Theatre  
P.O. Box 1809  
San Antonio, Texas 78296

Phone Numbers:

### For Technical Questions:

**Brian Henderson, Stage Manager**

(210) 207-8525 ph

[Brian.Henderson@sanantonio.gov](mailto:Brian.Henderson@sanantonio.gov) e-mail

**Art Guillermo, Senior AV Technician**

(210) 207-6301 ph

[Art.Guillermo@sanantonio.gov](mailto:Art.Guillermo@sanantonio.gov) e-mail

## *Lila Cockrell Theatre: Service Provider Directory*

### **BUSINESS CENTER**

- **THE UPS STORE**

Phone (210) 258-8950

Fax (210) 258-8951

E-mail: [store4180@theupsstore.com](mailto:store4180@theupsstore.com)

Web Site: [www.UPSstore.com](http://www.UPSstore.com)

*Sometimes the smallest details are the most challenging to coordinate. Not at the Henry B. Gonzalez Convention Center. With **THE UPS STORE** on site, you, your exhibitors and attendees can ship, mail, fax, photocopy or create a last-minute presentation.*



# Lila Cockrell Technical Specifications Package



## CATERING AND CONCESSIONS

- [RK Group](#)

Phone (210) 225-4535

Fax (210) 224-5120

E-mail: [sales@therkgroup.com](mailto:sales@therkgroup.com)

Web Site: [www.therkgroup.com](http://www.therkgroup.com)

***The RK Group**, San Antonio's premiere full service Caterer has been the exclusive provider at the San Antonio Convention Center for over 30 years.*

## ELECTRICAL

*For your electrical needs at the Convention Center or Lila Cockrell Theatre, you may choose from one of the following exclusive electrical service providers:*

- [Edlen Electrical Exhibition Services](#)

Phone (210) 662-9450

Fax (210) 662-9640

E-mail: [sanantonio@edlen.com](mailto:sanantonio@edlen.com)

Web Site: [www.edlen.com](http://www.edlen.com)

- [Freeman Electrical Services](#)

Phone (210) 227-0341

Fax (210) 212-8049

E-mail: [freemansanantonioes@freemanco.com](mailto:freemansanantonioes@freemanco.com)

Web Site: [www.freemanco.com](http://www.freemanco.com)

## SECURITY

- [City of San Antonio Off-Duty Employment Unit](#)

Phone: (210) 207-7020

Fax (210) 207-3314

E-mail: [SAPDODEU@sanantonio.gov](mailto:SAPDODEU@sanantonio.gov)

*The **City of San Antonio's Off-Duty Police Employment Unit** is the exclusive provider of all event-related security services. In addition to other requirements, uniformed police officers must be hired at the expense of the licensee to monitor the move-in and move-out of areas, control shuttle bus access to designated drop-off areas, and provide any overnight security coverage as needed. In addition, Convention Center policy requires that an off-duty police officer be present during events at which alcoholic beverages are served.*



# Lila Cockrell Technical Specifications Package

---



## **FIRE MARSHALL**

- **San Antonio Fire Prevention**

Capt. Kelly Turner  
Lieutenant Ruben Cabello

Phone (210) 207-8410  
(210) 207-3695  
Fax (210) 207-7949

Email: [firespecialevents@sanantonio.gov](mailto:firespecialevents@sanantonio.gov)

*SAFP must be contacted for hazing, smoke, pyro, any kind of live flame effect.*

## **TELECOMMUNICATIONS / INTERNET**

- **Smart City**

Phone (210) 258-8900  
Fax (210) 258-8901

E-mail: [ghuerta@smartcity.com](mailto:ghuerta@smartcity.com)

Web Site: [www.smartcity.com](http://www.smartcity.com)

*SmartCity offers the exhibitor a complete package of telephone, internet and data networking services all from a convenient, single source.*

## **AUDIO VISUAL / PRODUCTION COMPANIES**

- **PSAV Presentation Services**

Contact: Omar Zamora

Phone (210) 308-0182  
Fax (210) 349-5667

E-mail: [ozamora@psav.com](mailto:ozamora@psav.com)

Web Site: [www.psav.com/sanantonio](http://www.psav.com/sanantonio)